

CBMC Vacation Week at Mo Ranch

June 9-14, 2019

CBMC invites you to join us for our Vacation Week, bringing you & yours closer to Christ.

"A little one shall become a thousand and a small one a strong nation. I, the Lord, will hasten it in its time."
Isaiah 60:22



Mo Ranch, 2229 FM 1340,

Hunt, TX 78024

moranch.org

Chapel on the Hill 2018



WELCOME to MO RANCH!

Mo Ranch is located
in the Texas' beautiful

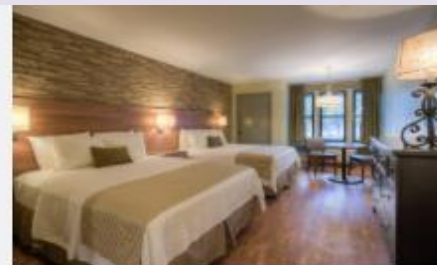
Hill Country. While you're at Mo Ranch you'll be able to enjoy: the Guadalupe River, tubing, two swimming pools, sand volleyball, tennis, fishing, canoeing, hiking & nature trails, ropes course & the famous Mo Ranch water slide and rope swing.

FACILITIES & AMENITIES

We start with **check-in at 4pm** on Sunday & ends by lunch on Friday and offers programs & activities for every age level. If you arrive after 6pm, you can check in at the Mo Ranch office.

Breakfast, lunch & dinner are served each day in the King Dining Hall; a cafeteria style facility with tables for seating up to ten.

Rooms are motel style with 2 queen beds & full-sized bathroom. In trying to get away from our hectic lifestyles- rooms have no phones or TV's. Wi-Fi is available and cell service is good- but dependent upon your carrier.



Wynne Flato



Pheasant Run



Color Fun 'Run'

ADULT PROGRAM

We bring your family experienced leaders who combine Bible truths, group discussions, music, games, crafts, snacks & plenty of fun to stimulate personal growth & maturity in Christ.

In addition to our featured Bible Hour and Marriage and Family speakers, a variety of discussion groups will be offered throughout the week on topics such as: discipleship, finances, work, marriage, parenting, & leadership.



Bible Hour Speaker, Dave Rathkamp

was called to Houston, TX In 1981 from Atlanta GA, where he was Tennis Director at the 600-member Cherokee Town and Country Club. He came into a personal relationship with Jesus Christ in 1976 and was discipled one on one by Joe Coggeshall for 5 intensive years. Like Joe, Dave's passion is building businessmen one at a time by helping them to become more intimate with Christ.



Dave lives with his wife Donna, and they have 4 grown children and many grand and great- grandchildren. Donna is an integral part of his work, discipling women and keeping him on track, to accomplish the vision that God has given him.

Dave will be speaking on the topic of discipleship. His focus will be, "WHAT IS A DISCIPLE, AND HOW ARE THEY MADE?"

CHILDREN & YOUTH



Children, Youth & Young Adults join one of six age groups: nursery (0-2), 3-4yrs, K-1st, Grades 2-5, Grades 6-8, High School & Young Singles (*college age & single adults with NO children*). All programs from nursery to YS, are designed by the leaders to be age appropriate. All ages enjoy the benefit of learning about Christ both inside & outside of the class rooms.

MARRIAGE/FAMILY Speakers - TBD

HIGH SCHOOL GROUP



During the week, the high school group stays together in a dorm facility (with their HS leaders), which also serves as their class room. Many of the leaders return year after year, so an ongoing relationship is developed with the youth. The leaders are caring, experienced, & motivated to bring Christ to the real world your child lives in each day.

HS & College guys vs. Men Volleyball

Costs:

Reg. Fee : \$ 125

Conference & Meals:

| | |
|--------------------------------|--------|
| Adult | \$ 305 |
| Young Singles | \$ 250 |
| High School | \$ 415 |
| Middle School (12-14 yrs. old) | \$ 225 |
| Child 4-11 yrs. old | \$ 180 |
| Under 4 yrs. old | \$ 105 |

Room Rate for Vacation Week:

| | |
|--------------|--------|
| Pheasant Run | \$ 560 |
| Wynne Flato | \$ 645 |

Young Singles: *(this is college age & single adults with NO children)*, rate is based on rooming with parents. (A '3rd Adult charge' of \$7 per night, will be added, if more than 2 adults are in a room) If a separate room is wanted, cost is additional & based on availability.

High Schoolers: *stay with HS leaders in separate facilities, located on the grounds.*

Personal check, bank checks, Zelle pay, bill pay, (no credit/debit cards) payable to:

CBMC VW, 8203 Willow Place S. #210,
Houston, TX 77070

Phone: 281-890-5078 dshelton@cbmc.com

EXPENSE EXAMPLE:

2 adults, 3 children (ages 5, 12 & HS) staying in Wynne Flato:

| | |
|---------------------|--------|
| Registration | \$ 125 |
|---------------------|--------|

| | |
|---------------------------|-----|
| Room (Wynne Flato) | 645 |
|---------------------------|-----|

Program/Meals:

| | |
|---------------------|-----|
| 2 Adults (\$305ea.) | 610 |
|---------------------|-----|

| | |
|---------------|-----|
| 1 High School | 415 |
|---------------|-----|

| | |
|--------------------------|-----|
| 1 Middle School (age 12) | 225 |
|--------------------------|-----|

| | |
|-----------------|-----|
| 1 Child (age 5) | 180 |
|-----------------|-----|

| | |
|----------------------|------------------------|
| <u>TOTAL:</u> | <u>\$ 2,200</u> |
|----------------------|------------------------|